



Product Description

The Cobra Parasleeve™ is a one-step installation anchor. It is easy and quick to install. There are six head styles available, and more than 34 sizes available: from 1/4"x5/8" to 3/4"x 6-1/4". Available in two types of steel: Carbon steel and 304 Stainless steel. APPROVALS: UL.. Underwriters Laboratory - File EX4303 Project 90NK20664

Features & Benefits

- ▶ Pre-assembled, all-purpose medium duty anchor
- ▶ One-Step installation anchor
- ▶ Anchor size = Hole size
- ▶ Available sizes are from 1/4"x5/8" to 3/4" x 6-1/4"

Perfect for:



Satellite dishes, awnings, thermo pumps, ornamental fixtures, signs etc...

Packagings:



Parasleeve™



Product sizes & Materials

Plated steel

1/4" x 5/8"	1/2" x 4"
1/4" x 1-3/8"	1/2" x 6"
1/4" x 2-1/4"	5/8" x 2-1/4"
5/16" x 1-1/2"	5/8" x 3"
5/16" x 2-1/2"	5/8" x 4-1/4"
3/8" x 1-7/8"	5/8" x 6"
3/8" x 3"	3/4" x 2-1/2"
3/8" x 4"	3/4" x 4-1/4"
1/2" x 2-1/4"	3/4" x 6-1/4"
1/2" x 3"	

Stainless steel

1/4" x 1-3/8"
3/8" x 1-7/8"
3/8" x 3"
1/2" x 2-1/4"
1/2" x 3"

Suitable Base Materials

- ▶ Concrete
- ▶ Brick
- ▶ Hollow Block

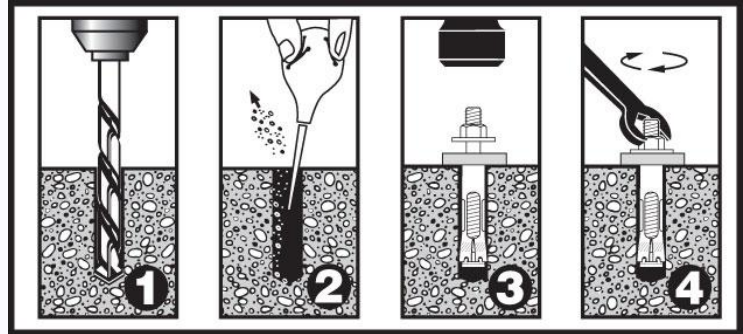


Masonry Anchors



Installation instructions

1. Drill a pilot hole into the wall (click on "Technical Specifications" for the applicable drill sizes).
2. Using an air pump to remove dust from the hole.
3. Insert the bolt through the object you need to afix and then into the Parasleeve™.
4. Using a wrench, turn clockwise until there is a strong resistance.



Tools required



Load Capacities

Material	Size	Head Styles	Drill Size	Min. Embedment	PULL	PULL	SHEAR	SHEAR	PULL	PULL	SHEAR	SHEAR
					MAX	SAFE	MAX	SAFE	MAX	SAFE	MAX	SAFE
					lbs	lbs	lbs	lbs	kg	kg	kg	kg
Concrete 3000 PSI	1/4" x 5/8"	Acorn	1/4"	5/8"	800	200	1500	375	363	91	680	170
	1/4" x 1-3/8"	Acorn	1/4"	1-3/8"	1300	325	1500	375	590	147	680	170
	1/4" x 2-1/4"	Acorn	1/4"	1-3/8"	1300	325	1500	375	590	147	680	170
	5/16" x 1-1/2"	Hexagonal	5/16"	1-1/2"	1700	425	2000	500	771	193	907	227
	5/16" x 2-1/2"	Hexagonal	5/16"	1-1/2"	1700	425	2000	500	771	193	907	227
	3/8" x 1-7/8"	Hexagonal	3/8"	1-7/8"	2400	600	3000	700	1089	272	1361	318
	3/8" x 3"	Hexagonal	3/8"	1-7/8"	2400	600	3000	700	1089	272	1361	318
	3/8" x 4"	Hexagonal	3/8"	1-7/8"	2400	600	3000	700	1089	272	1361	318
	1/2" x 2-1/4"	Hexagonal	1/2"	2-1/4"	4700	1175	5200	1300	2132	533	2359	590
	1/2" x 3"	Hexagonal	1/2"	2-1/4"	4700	1175	5200	1300	2132	533	2359	590
	1/2" x 4"	Hexagonal	1/2"	2-1/4"	4700	1175	5200	1300	2132	533	2359	590
	1/2" x 6"	Hexagonal	1/2"	2-1/4"	4700	1175	5200	1300	2132	533	2359	590
	5/8" x 2-1/4"	Hexagonal	5/8"	2-1/4"	5900	1475	10100	2525	2676	669	4581	1145
	5/8" x 3"	Hexagonal	5/8"	2-1/4"	5900	1475	10100	2525	2676	669	4581	1145
	5/8" x 4-1/4"	Hexagonal	5/8"	2-1/4"	5900	1475	10100	2525	2676	669	4581	1145
	5/8" x 6"	Hexagonal	5/8"	2-1/4"	5900	1475	10100	2525	2676	669	4581	1145
3/4" x 2-1/2"	Hexagonal	3/4"	N/A	N/A	N/A	N/A	N/A	N/A	N/A	N/A	N/A	N/A
3/4" x 4-1/4"	Hexagonal	3/4"	3-3/8"	9200	2300	15000	3750	4173	1043	6804	1701	
3/4" x 6-1/4"	Hexagonal	3/4"	3-3/8"	9200	2300	15000	3750	4173	1043	6804	1701	

***Always use safe load capacities*



Load Capacities

Material	Size	Head Styles	Drill Size	Min. Embedment	PULL MAX lbs	PULL SAFE lbs	SHEAR MAX lbs	SHEAR SAFE lbs	PULL MAX kg	PULL SAFE kg	SHEAR MAX kg	SHEAR SAFE kg	
Concrete 3000 PSI	1/4" x 1-1/2"	Flat	1/4"	1-3/8"	1300	325	1500	375	590	147	680	170	
	1/4" x 2-1/4"	Flat	1/4"	1-3/8"	1300	325	1500	375	590	147	680	170	
	1/4" x 3-1/8"	Flat	1/4"	1-3/8"	1300	325	1500	375	590	147	680	170	
	1/4" x 4"	Flat	1/4"	1-3/8"	1300	325	1500	375	590	147	680	170	
	5/16" x 2-1/2"	Flat	5/16"	1-1/2"	1700	425	2000	500	771	193	907	227	
	5/16" x 3-1/2"	Flat	5/16"	1-1/2"	1700	425	2000	500	771	193	907	227	
	3/8" x 2-3/4"	Flat	3/8"	1-7/8"	2400	600	3000	750	1089	272	1361	340	
	3/8" x 4"	Flat	3/8"	1-7/8"	2400	600	3000	750	1089	272	1361	340	
	3/8" x 5"	Flat	3/8"	1-7/8"	2400	600	3000	750	1089	272	1361	340	
	3/8" x 6"	Flat	3/8"	1-7/8"	2400	600	3000	750	1089	272	1361	340	
	1/4" x 1-1/2"	Round	1/4"	5/8"	800	200	1500	375	363	91	680	170	
	1/4" x 2-1/4"	Round	1/4"	1-3/8"	1300	325	1500	375	590	147	680	170	
	1/4" x 3-1/8"	Round	1/4"	1-3/8"	1300	325	1500	375	590	147	680	170	
	1/4" x 4"	Round	1/4"	1-3/8"	1300	325	1500	375	590	147	680	170	
	3/8" x 2-3/4"	Round	3/8"	1-7/8"	2400	600	3000	750	1089	272	1361	340	
	3/8" x 4"	Round	3/8"	1-7/8"	2400	600	3000	750	1089	272	1361	340	
	3/8" x 5"	Round	3/8"	1-7/8"	2400	600	3000	750	1089	272	1361	340	
	3/8" x 6"	Round	3/8"	1-7/8"	2400	600	3000	750	1089	272	1361	340	
	1/4" x 2"	Threshold	1/4"	1-3/8"	n/a	n/a	n/a	n/a	n/a	n/a	n/a	n/a	n/a
	3/8" x 1-7/8" RC	Coupling Nut	3/8"	1-7/8"	2400	600	3000	750	1089	272	1361	340	
1/2" x 2-1/4" RC	Coupling Nut	1/2"	2-1/4"	4700	1175	5200	1300	2132	533	2359	590		
5/8" x 2-1/4" RC	Coupling Nut	5/8"	2-1/4"	5900	1475	10100	2525	2676	669	4581	1145		

***Always use safe load capacities*

Stainless Steel

Material	Size	Head Styles	Drill Size	Min. Embedment	PULL MAX lbs	PULL SAFE lbs	SHEAR MAX lbs	SHEAR SAFE lbs	PULL MAX kg	PULL SAFE kg	SHEAR MAX kg	SHEAR SAFE kg
Concrete 3000 PSI	1/4" X 1-3/8"	Hexagonal	1/4"	1-3/8"	1300	325	1500	375	590	147	680	170
	1/4" x 2-1/4"	Hexagonal	1/4"	1-3/8"	1300	325	1500	375	590	147	680	170
	1/4" x 3-1/8"	Hexagonal	1/4"	1-3/8"	1300	325	1500	375	590	147	680	170
	5/16" x 1-1/2"	Hexagonal	5/16"	1-1/2"	1700	425	2000	500	771	193	907	227
	5/16" x 2-1/2"	Hexagonal	5/16"	1-1/2"	1700	425	2000	500	771	193	907	227
	3/8" x 1-7/8"	Hexagonal	3/8"	1-7/8"	2400	600	3000	750	1089	272	1361	340
	3/8" x 2-3/4"	Hexagonal	3/8"	1-7/8"	2400	600	3000	750	1089	272	1361	340
	3/8" x 3"	Hexagonal	3/8"	1-7/8"	2400	600	3000	750	1089	272	1361	340
	3/8" x 4"	Hexagonal	3/8"	1-7/8"	2400	600	3000	750	1089	272	1361	340
	1/2" x 2-1/4"	Hexagonal	1/2"	2-1/4"	4700	1175	5200	1300	2132	533	2359	590
	1/2" x 3"	Hexagonal	1/2"	2-1/4"	4700	1175	5200	1300	2132	533	2359	590

***Always use safe load capacities*